

Hampshire Water Transfer and Water Recycling Project Environmental Statement - Figure 13.14 Hampshire Integrated Character Assessment

VOLUME NUMBER: 6

PLANNING INSPECTORATE SCHEME NUMBER: WA010002

APPLICATION DOCUMENT REFERENCE: 6.3

APFP REGULATION: 5(2)(a)

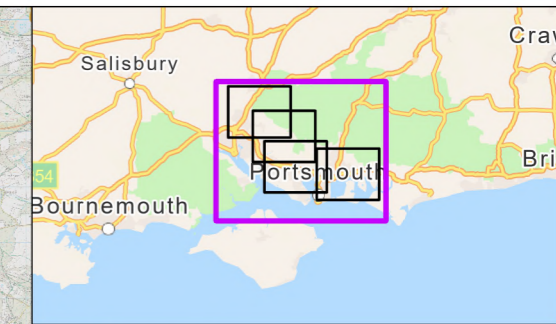
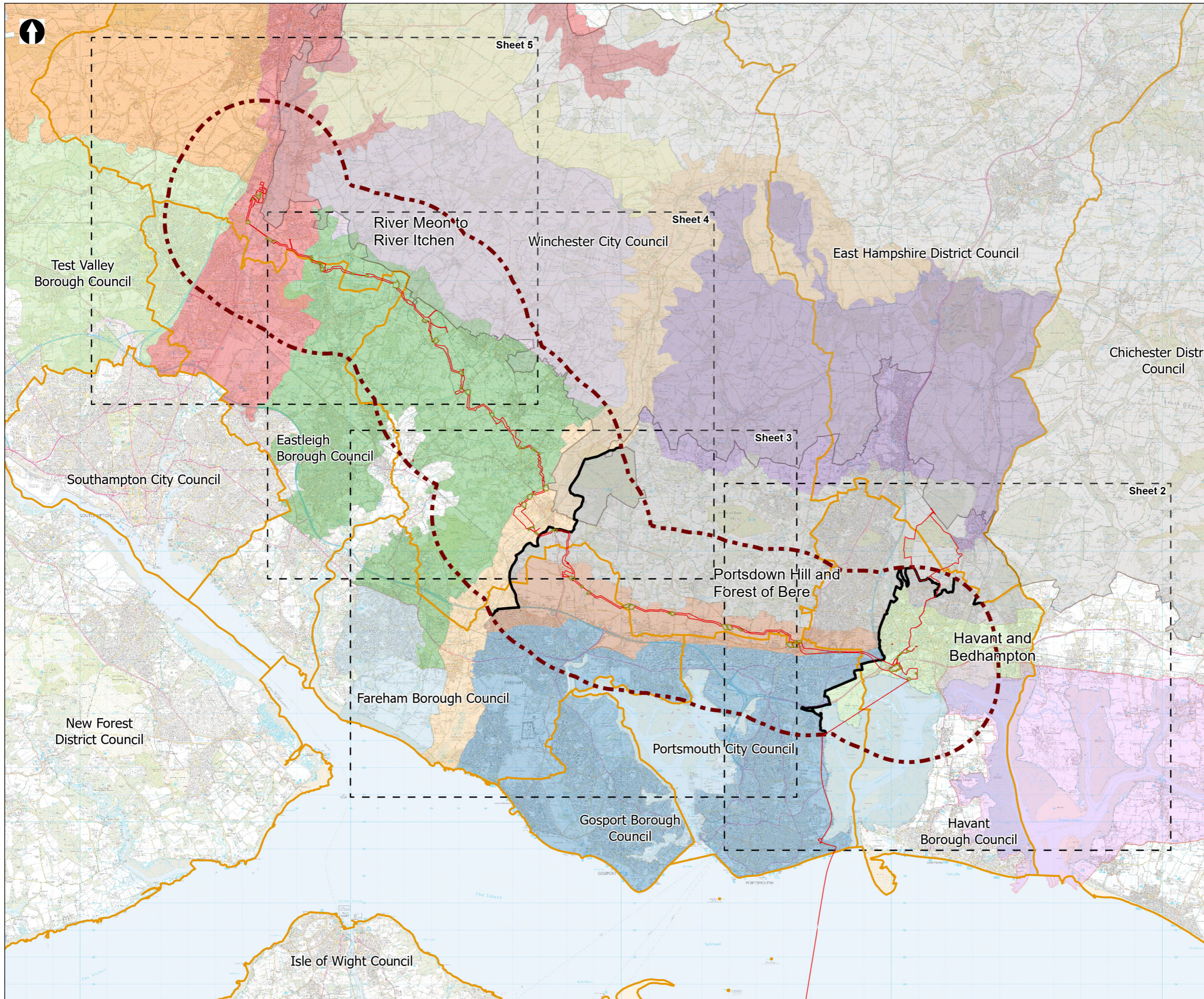
May 2026

Version 0



from
**Southern
Water** 

The Southern Water logo consists of the words 'Southern' and 'Water' stacked vertically in a dark blue, sans-serif font. To the right of the word 'Water' is a graphic element consisting of three stylized, wavy lines in shades of blue, representing water.



- Order Limits
 - Landscape Study Area 3km
 - Principal sections within the study area
 - Sheet extent boxes 1:50k
 - Local planning authorities
 - South Downs National Park
 - Chichester Harbour National Landscape
 - Water Recycling Plant Site
 - Construction compounds
- Landscape Character Areas (LCA)**
- LCA 10a: Langstone and Chichester Harbours
 - LCA 10b: Portsmouth Harbour
 - LCA 2d: Romsey to Eastleigh Wooded Lowland Mosaic
 - LCA 2e: Forest of Bere West
 - LCA 2f: Forest of Bere East
 - LCA 3c: Itchen Valley
 - LCA 3e: Meon Valley
 - LCA 7f: West Winchester Downs
 - LCA 7g: Owslebury and Corhampton Downs
 - LCA 7h: South East Hampshire Downs
 - LCA 8g: East Winchester Open Downs
 - LCA 8i: Portsdown Hill Open Downs
 - LCA 9e: Chilling Brownwich and Locks Heath Coastal Plain
 - LCA 9f: Gosport and Fareham Coastal Plain
 - LCA 9g: Havant and Emsworth Coastal Plain

Coordinate system: British National Grid; Datum: OSGB 1936
 Data sources: © Crown copyright and database rights 2026 Ordnance Survey 0100031673. Sources: Esri, TomTom, Garmin, FAO, NOAA, USGS, © OpenStreetMap contributors, and the GIS User Community

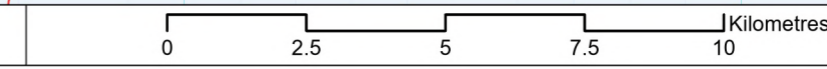
PROJECT TITLE
 Hampshire Water Transfer and Water Recycling Project

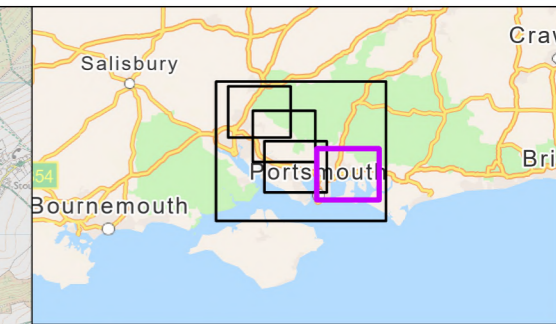
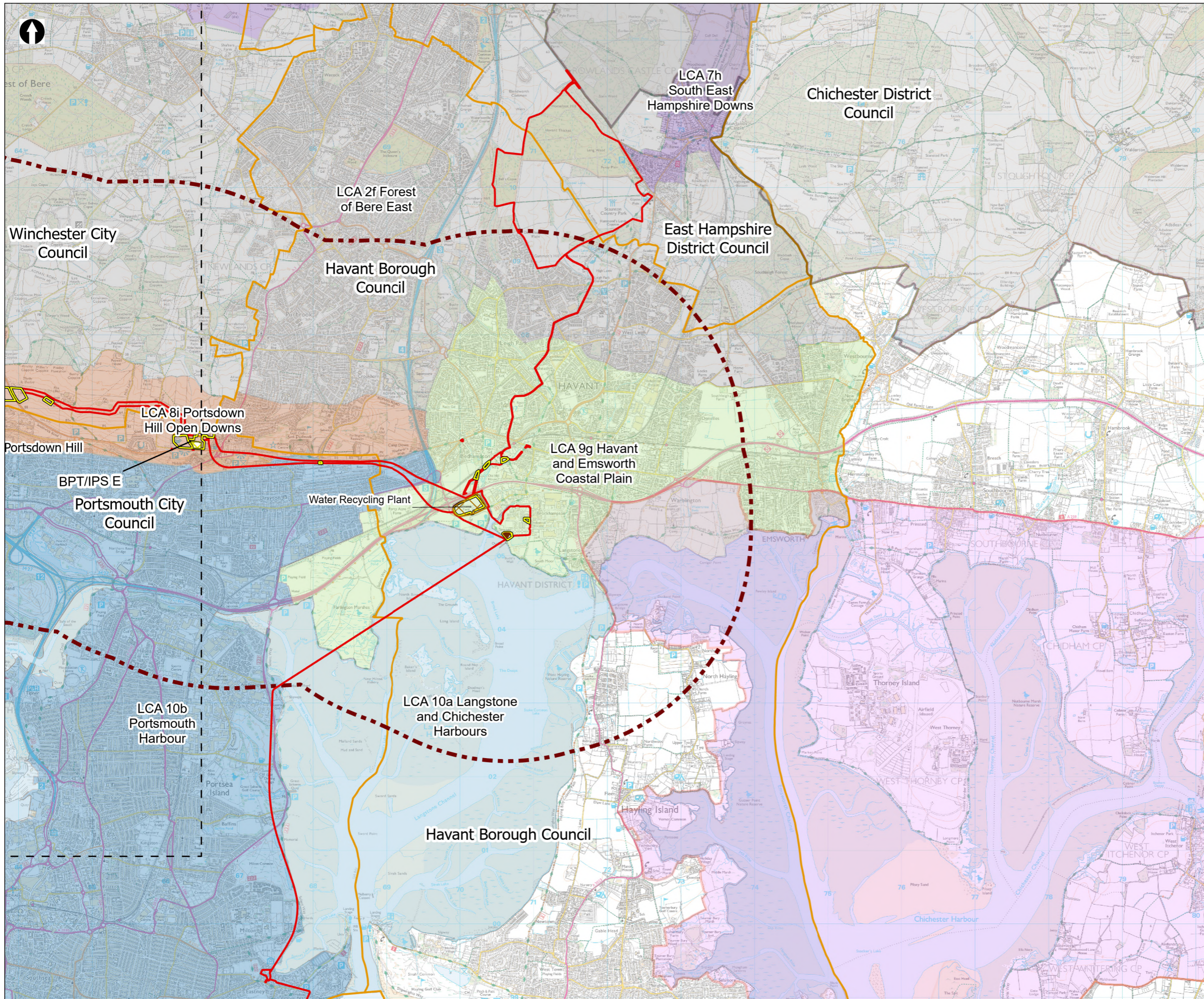


Figure 13.14
 Hampshire Integrated Character Assessment
 Sheet 1 of 5

| | | | |
|---------------------------------|--------------------------|-----------------------|------------------------|
| Drawn DL | GIS Checked MW | Checked MP | Approved AK |
| Scale at A3 1:136,000 | Status Final | Revision 05 | Security STD |

Drawing Number
PC5223-RHD-ES-ZZ-D-Z-0138





- Order Limits
 - Landscape Study Area 3km
 - Sheet extent boxes 1:50k
 - Local planning authorities
 - South Downs National Park
 - Chichester Harbour National Landscape
 - Water Recycling Plant Site
 - Construction compounds
 - Limits of Deviation for Budds Farm Pumping Station
- Landscape Character Areas (LCA)**
- LCA 10a: Langstone and Chichester Harbours
 - LCA 10b: Portsmouth Harbour
 - LCA 2f: Forest of Bere East
 - LCA 7h: South East Hampshire Downs
 - LCA 8i: Portsdown Hill Open Downs
 - LCA 9g: Havant and Emsworth Coastal Plain
- Above Ground Plant**
- Break Pressure Tank & Intermediate Pumping Station

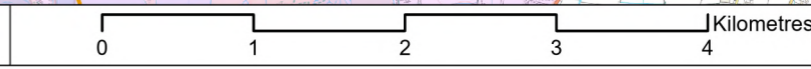
Coordinate system: British National Grid; Datum: OSGB 1936
 Data sources: © Crown copyright and database rights 2026 Ordnance Survey 0100031673. Sources: Esri, TomTom, Garmin, FAO, NOAA, USGS, © OpenStreetMap contributors, and the GIS User Community

PROJECT TITLE
 Hampshire Water Transfer and Water Recycling Project

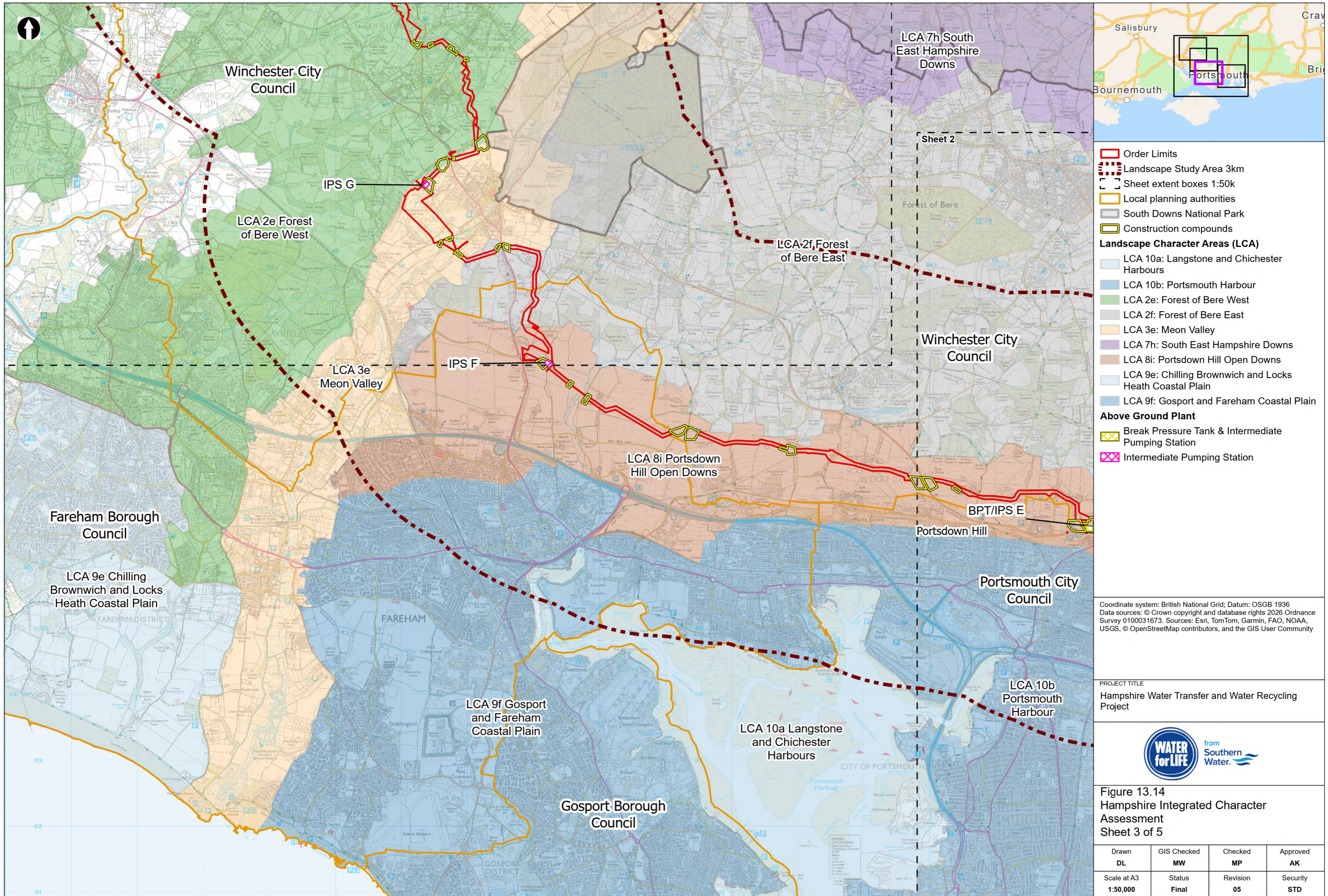


Figure 13.14
 Hampshire Integrated Character Assessment
 Sheet 2 of 5

| | | | |
|--------------------------------|--------------------------|-----------------------|------------------------|
| Drawn DL | GIS Checked MW | Checked MP | Approved AK |
| Scale at A3 1:50,000 | Status Final | Revision 05 | Security STD |



Drawing Number
PC5223-RHD-ES-ZZ-D-Z-0138



- Order Limits
- Landscape Study Area 3km
- Sheet extent boxes 1:50k
- Local planning authorities
- South Downs National Park
- Construction compounds
- Landscape Character Areas (LCA)**
- LCA 10a: Langstone and Chichester Harbours
- LCA 10b: Portsmouth Harbour
- LCA 2e: Forest of Bere West
- LCA 2f: Forest of Bere East
- LCA 3e: Meon Valley
- LCA 7h: South East Hampshire Downs
- LCA 8i: Portsdown Hill Open Downs
- LCA 9e: Chilling Brownwich and Locks Heath Coastal Plain
- LCA 9f: Gosport and Fareham Coastal Plain
- Above Ground Plant**
- Break Pressure Tank & Intermediate Pumping Station
- Intermediate Pumping Station

Coordinate system: British National Grid; Datum: OSGB 1936
 Data sources: © Crown copyright and database rights 2026 Ordnance Survey 0100031673. Sources: Esri, TomTom, Garmin, FAO, NOAA, USGS, © OpenStreetMap contributors, and the GIS User Community

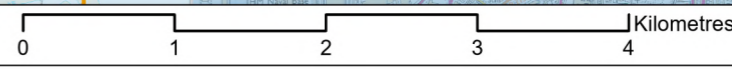
PROJECT TITLE
 Hampshire Water Transfer and Water Recycling Project



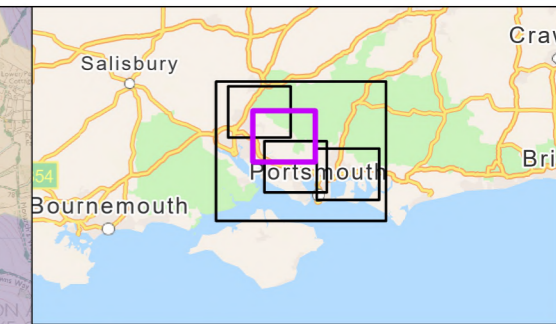
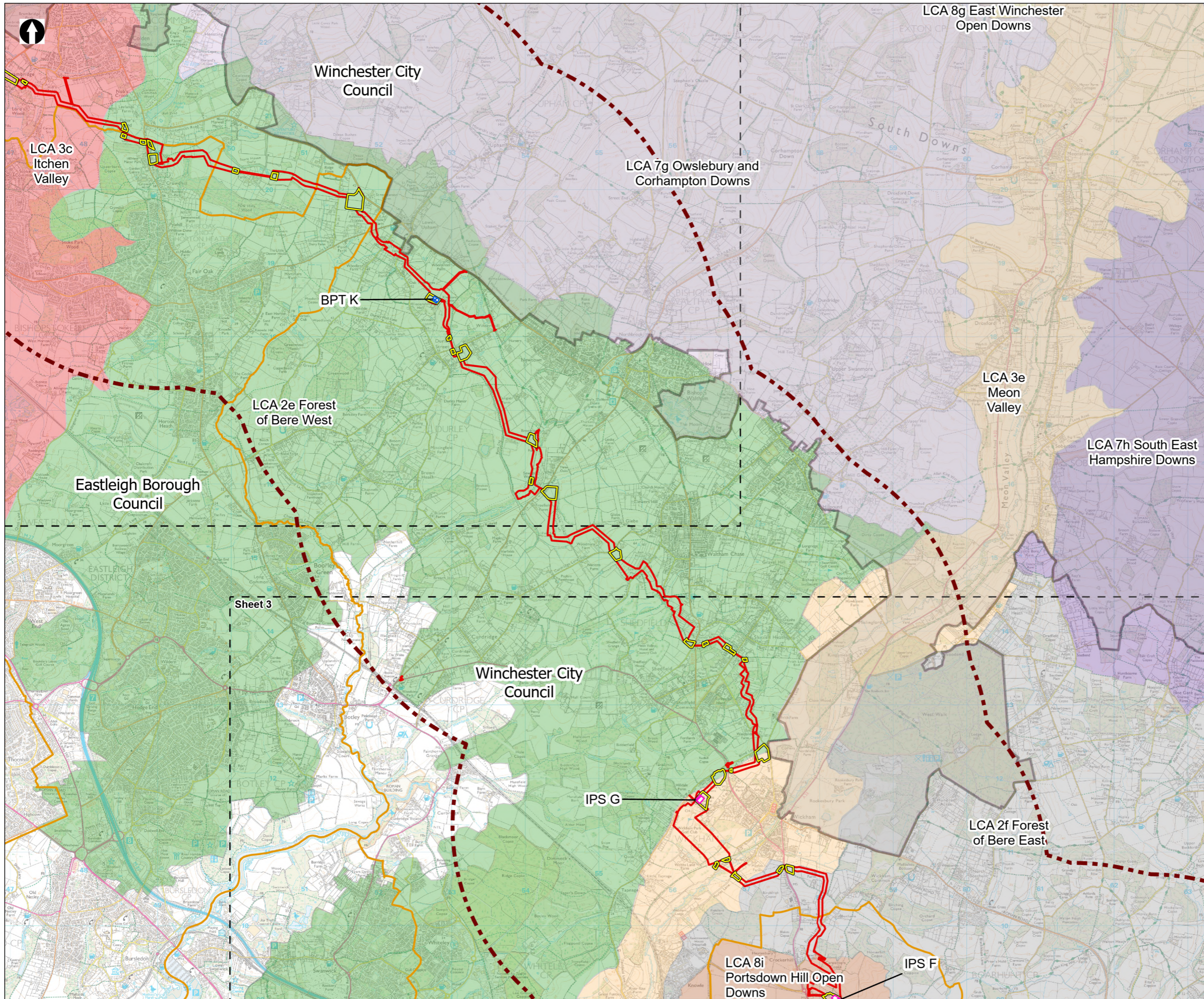
Figure 13.14
 Hampshire Integrated Character Assessment
 Sheet 3 of 5

| | | | |
|--------------------------------|--------------------------|-----------------------|------------------------|
| Drawn DL | GIS Checked MW | Checked MP | Approved AK |
| Scale at A3 1:50,000 | Status Final | Revision 05 | Security STD |

© Southern Water 2026
 This document is issued for the party which commissioned it and for specific purposes connected with the captioned project only. It should not be relied upon by any other party or used for any other purpose.
 We accept no responsibility for the consequences of this document being relied upon by any other party, or being used for any other purpose, or containing any error or omission which is due to an error or omission in data supplied to us by other parties.



Drawing Number
PC5223-RHD-ES-ZZ-D-Z-0138



- Order Limits
 - Landscape Study Area 3km
 - Sheet extent boxes 1:50k
 - Local planning authorities
 - South Downs National Park
 - Construction compounds
- Landscape Character Areas (LCA)**
- LCA 2e: Forest of Bere West
 - LCA 2f: Forest of Bere East
 - LCA 3c: Itchen Valley
 - LCA 3e: Meon Valley
 - LCA 7g: Owslebury and Corhampton Downs
 - LCA 7h: South East Hampshire Downs
 - LCA 8g: East Winchester Open Downs
 - LCA 8i: Portsdown Hill Open Downs
- Above Ground Plant**
- Break Pressure Tank
 - Intermediate Pumping Station

Coordinate system: British National Grid; Datum: OSGB 1936
 Data sources: © Crown copyright and database rights 2026 Ordnance Survey 0100031673. Sources: Esri, TomTom, Garmin, FAO, NOAA, USGS, © OpenStreetMap contributors, and the GIS User Community

PROJECT TITLE
 Hampshire Water Transfer and Water Recycling Project

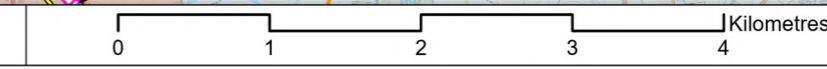


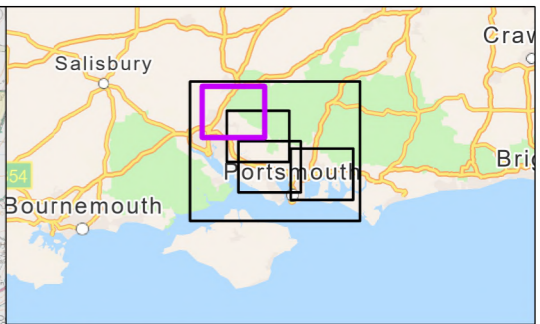
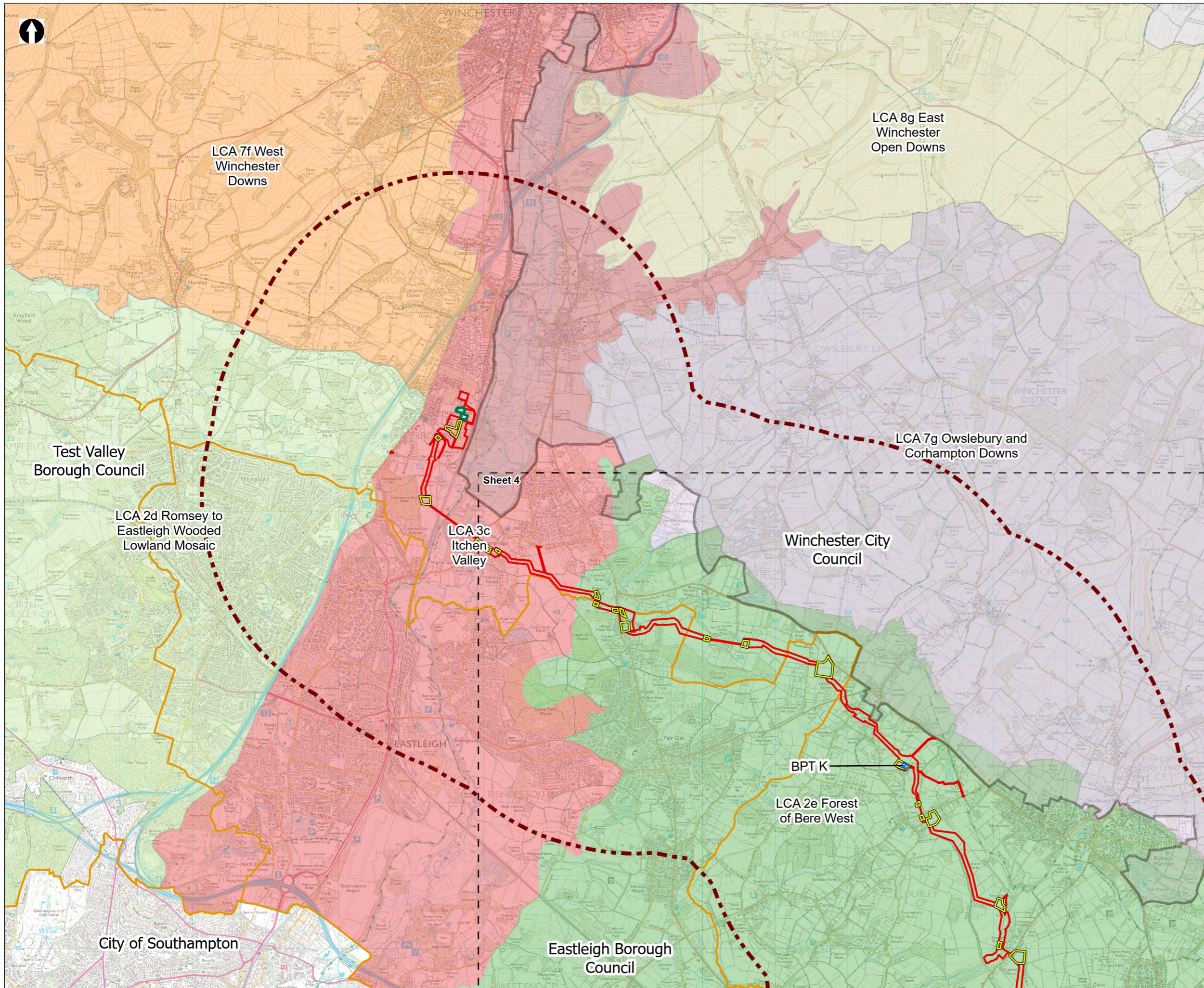
Figure 13.14
 Hampshire Integrated Character Assessment
 Sheet 4 of 5

| | | | |
|-------------------------|-------------------|----------------|-----------------|
| Drawn DL | GIS Checked MW | Checked MP | Approved AK |
| Scale at A3 1:50,000 | Status Final | Revision 05 | Security STD |

Drawing Number
 PC5223-RHD-ES-ZZ-D-Z-0138

© Southern Water 2026
 This document is issued for the party which commissioned it and for specific purposes connected with the captioned project only. It should not be relied upon by any other party or used for any other purpose.
 We accept no responsibility for the consequences of this document being relied upon by any other party, or being used for any other purpose, or containing any error or omission which is due to an error or omission in data supplied to us by other parties.





- Order Limits
 - Landscape Study Area 3km
 - Sheet extent boxes 1:50k
 - Local planning authorities
 - South Downs National Park
 - Construction compounds
 - Limits of Deviation for Otterbourne INNS Treatment Plant
- Landscape Character Areas (LCA)**
- LCA 2d: Romsey to Eastleigh Wooded Lowland Mosaic
 - LCA 2e: Forest of Bere West
 - LCA 3c: Itchen Valley
 - LCA 7f: West Winchester Downs
 - LCA 7g: Owslebury and Corhampton Downs
 - LCA 8g: East Winchester Open Downs
- Above Ground Plant**
- Break Pressure Tank

Coordinate system: British National Grid; Datum: OSGB 1936
 Data sources: © Crown copyright and database rights 2026 Ordnance Survey 0100031673. Sources: Esri, TomTom, Garmin, FAO, NOAA, USGS, © OpenStreetMap contributors, and the GIS User Community

PROJECT TITLE
 Hampshire Water Transfer and Water Recycling Project



Figure 13.14
 Hampshire Integrated Character Assessment
 Sheet 5 of 5

| | | | |
|-------------------------|-------------------|----------------|-----------------|
| Drawn DL | GIS Checked MW | Checked MP | Approved AK |
| Scale at A3 1:50,000 | Status Final | Revision 05 | Security STD |



Drawing Number
 PC5223-RHD-ES-ZZ-D-Z-0138